

1c 1978



1c 1979

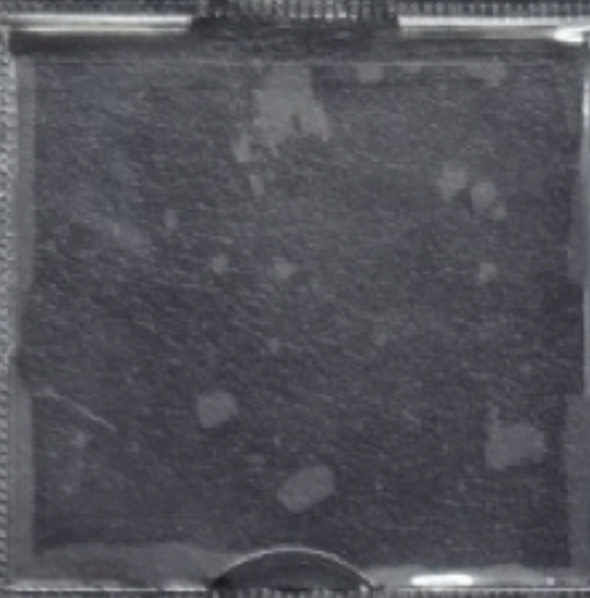
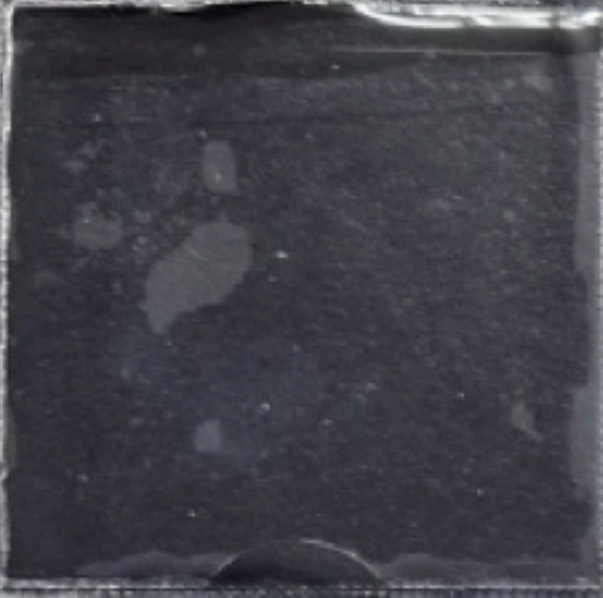


rare — Fdc

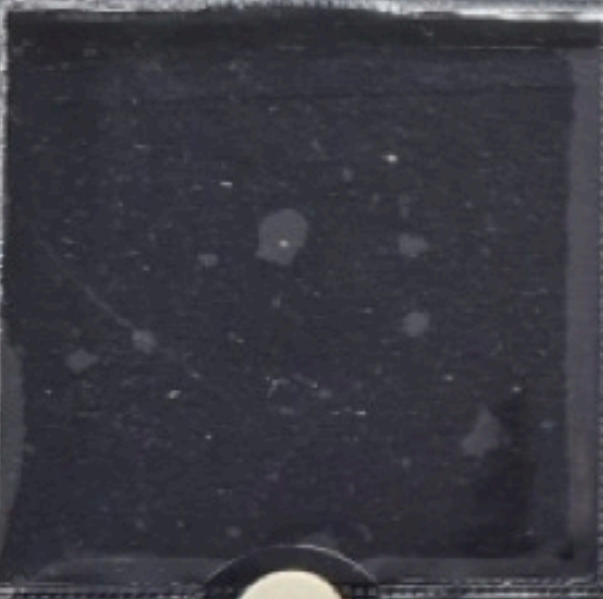
1c 1980



1c 1981



1c 1985



1c 1987



300

1c 1988



1c 1989



300

1c 1990



1c 1992



1c 1993



1c 1994





25c 1903

25c 1907

25c  
2 pms.

25c 1908

25c 1918

1919 25c

25c 1920

25c 1921

25c 1922

25c 1923

25c 1924

1925 25c

25c 1926

25c 1927

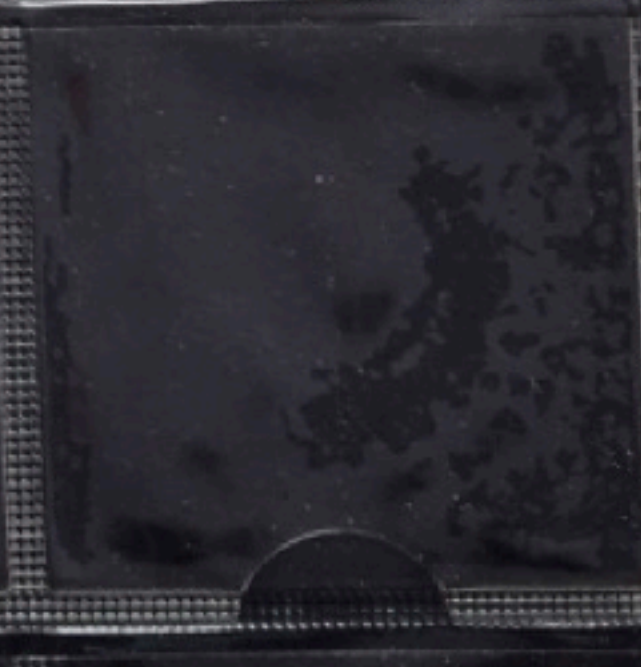
25c 1928

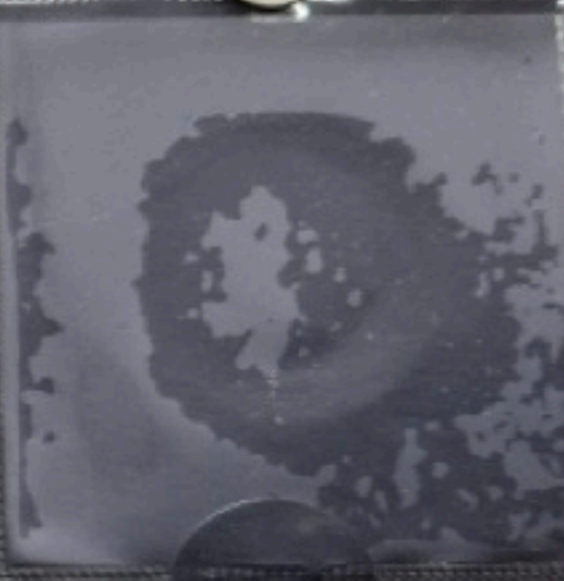
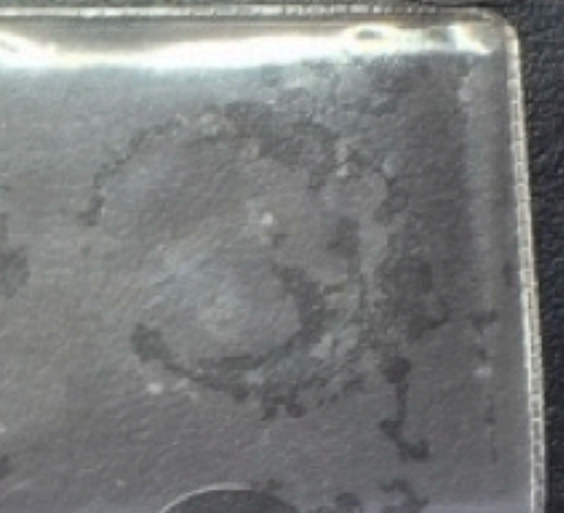
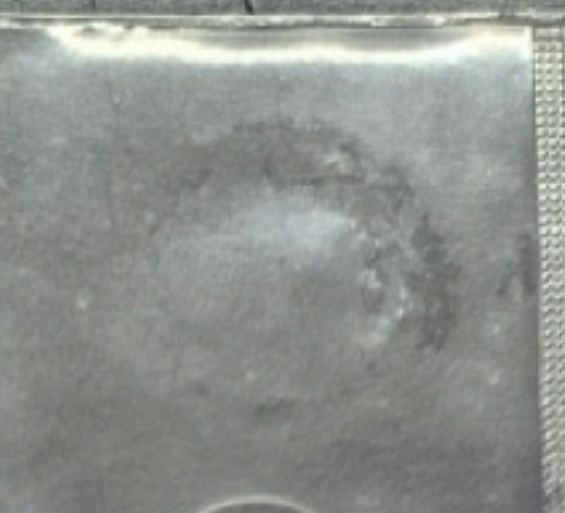
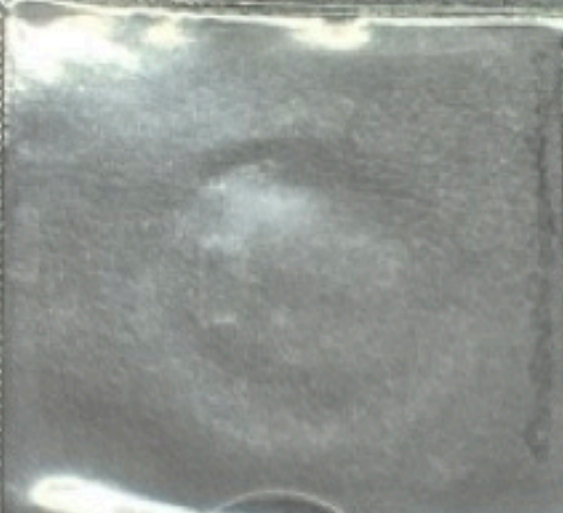
25c 1929

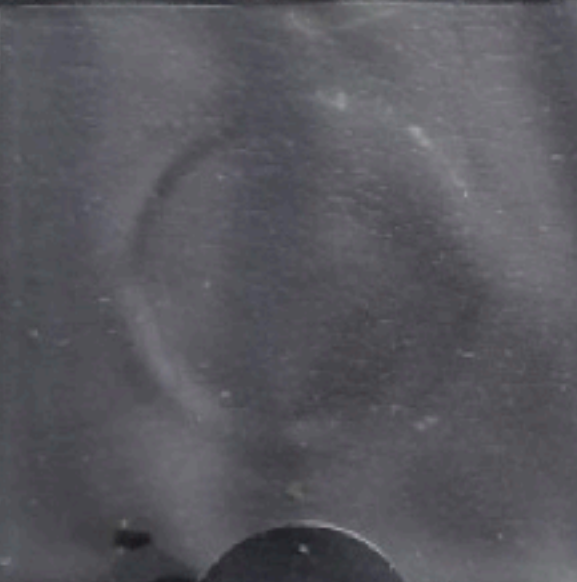
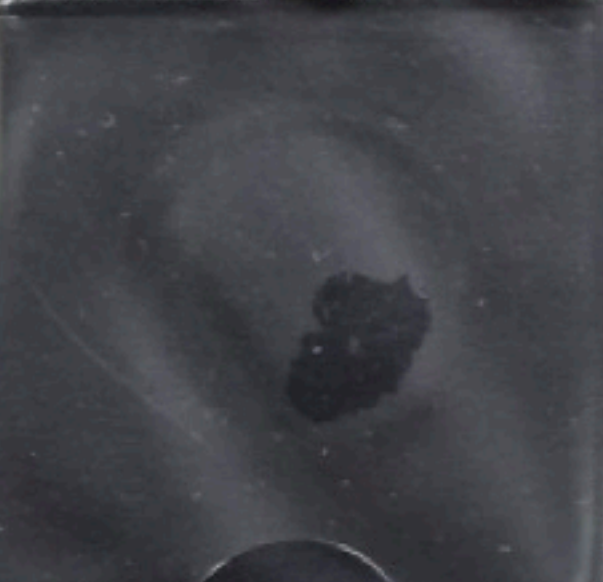
25c 1930

25c 1931

25c 1932







5F

1960



5F

1962



5F

1968



5F

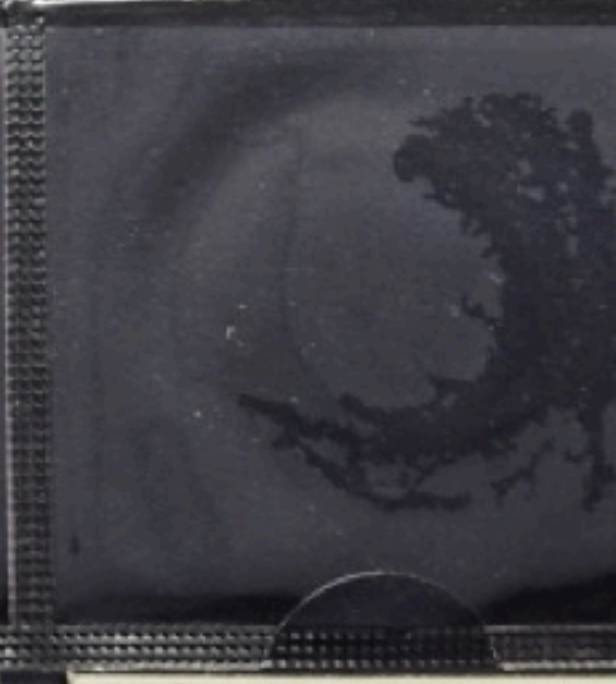
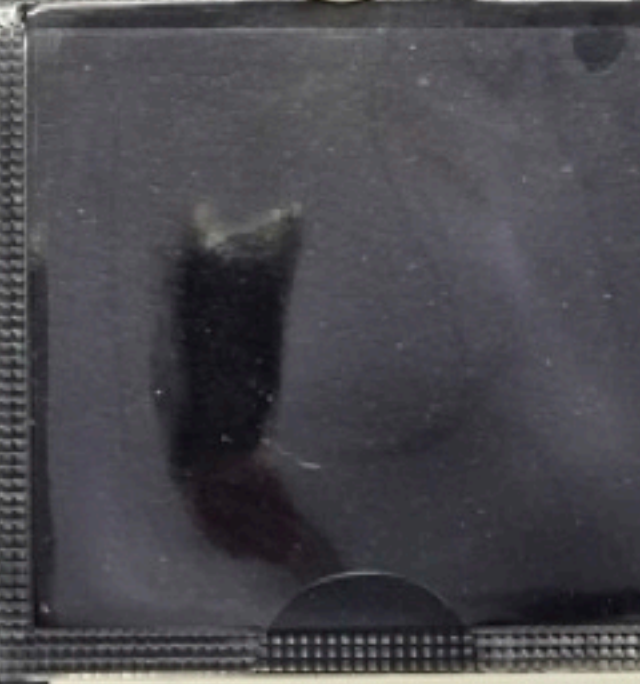
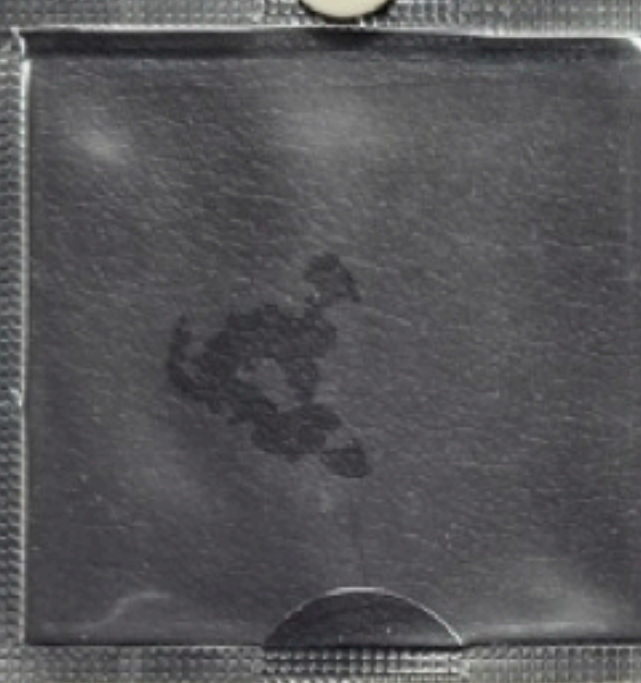
1964



5F

1966





Tour Eiffel



M. France



Voltaire



10F 1933



10F 1931



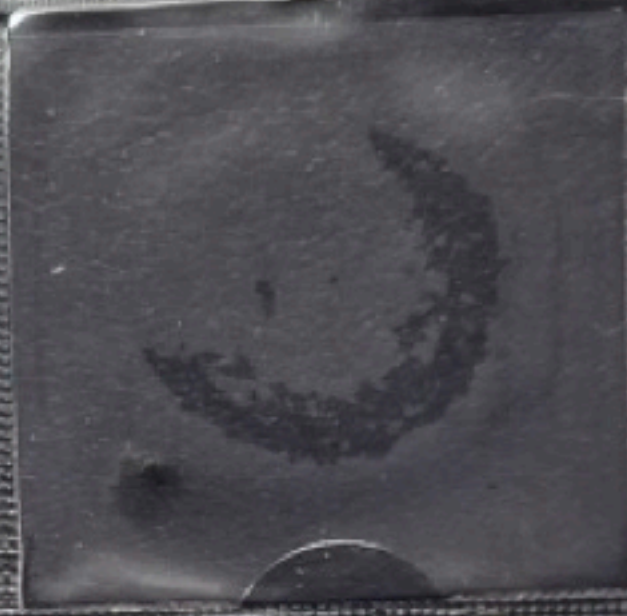
10F 1932



10F 1933



10F 1934  
3 Fermé 3



10F 1935



10F 1947



10F 1944 B



10F 1948



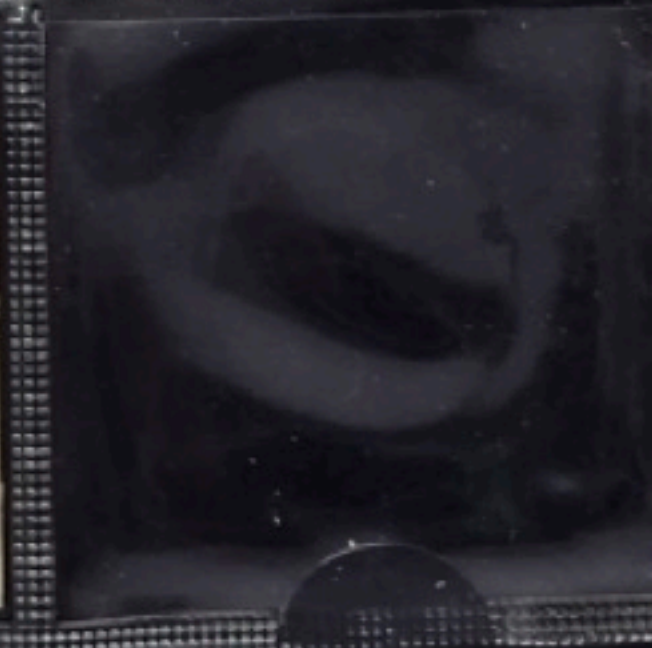
10F 1949



10F 1949



10F 1949 B



10-F

1957



10-F

1957

B



10-F

1958



10-F

1967



10-F

1968



10-F

1969



10-F

1973





20 F

1950



20 F

1952



20 F

1959



20 F

1992

5c



20 F

1993



20 F

1994  
abeille



20 F

1994  
dauphin



20 F

1995



20 F

1994



20 F

1998





G.M.  
9

50 F

1977



SUPREMEUR

100 F

1987



100 F

1988



100 F

1990



100 F

1994



# LE TIMBRE CLASSIQUE

*Lot partiellement scanné*

*Lot partially scanned*

**Le Timbre Classique**

**4 rue Drouot**

**75009 Paris**

**Tél 01 42 46 63 72**

[contact@letimbreclassique.com](mailto:contact@letimbreclassique.com)