

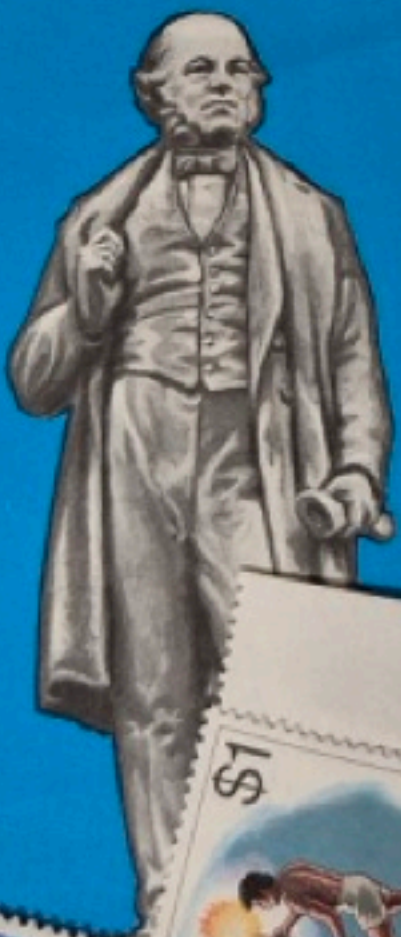


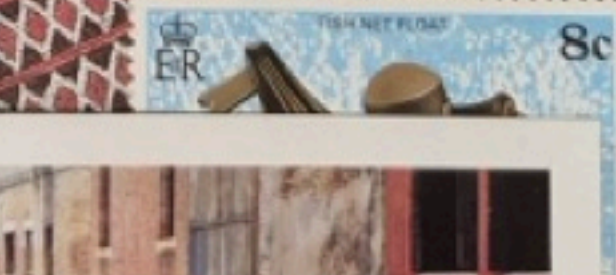
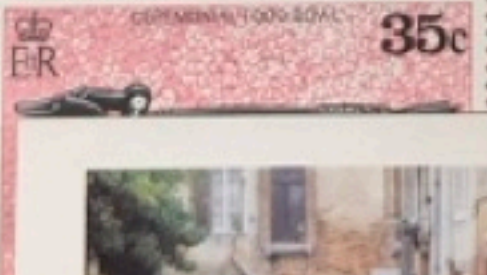




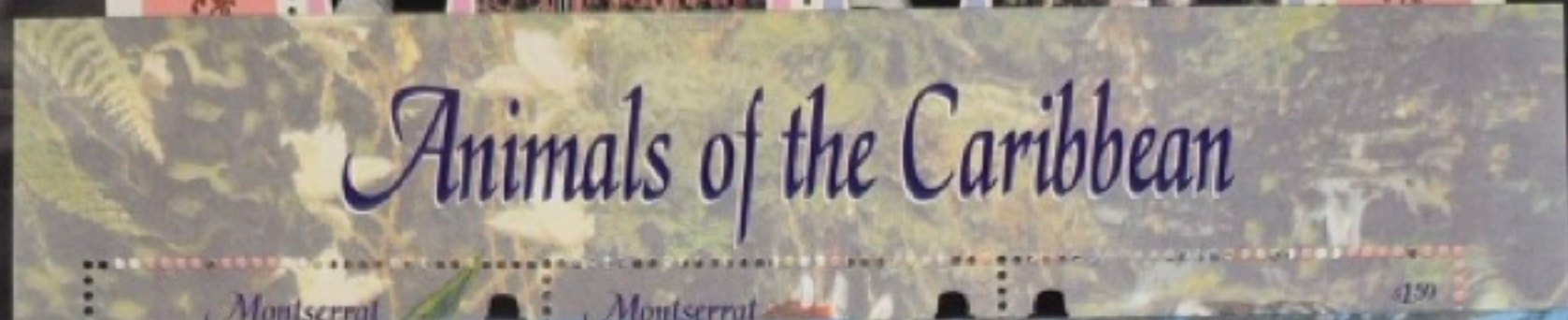
Sir ROWLAND HILL, ORIGINATOR OF THE PENNY POST

Sir ROWLAND HILL'S STATUE AT HIS BIRTHPLACE IN KIDDERMINSTER.





The Life and Times of Her Majesty Queen Elizabeth The Queen Mother





# Corals of Nevis-1

*Royal Wedding 1988*  
**\$4.50**  
 Congratulations from the people of  
**NEVIS**

TUBE SPONGE *Aplysina fistularis*     STIPING CORAL *Solenastrea bournoni*

Butterflies of Nevis

Butterflies of Nevis

Hawk-wing Coch

40c Kestreltail Coch

60c Emperor Helms

Queen Coch \$2

King Helms \$3

NEVIS

200 Years of Manned Flight  
 NEVIS 10c

80c

Golden Elegance Oriental Lily  
 NEVIS 30c

Flight  
 NEVIS \$5

NEVIS \$5

Garden Zinnia  
 NEVIS \$1.60

NEVIS

55c

\$5.00



Z A I R E

Z A I R E

ROTARY INTERNATIONAL

ROTARY INTERNATIONAL



75<sup>eme</sup> ANNIVERSAIRE

Z A I R E

Z A I R E



# ZAIRE

ZAIRE

1Z

ZAIRE



ZAIRE

2Z

ZAIRE



EXPOSITION PHILATELIQUE BELGO-ZAIROISE 1980

EXPOSITION PHILATELIQUE BELGO-ZAIROISE 1980

EXPOSITION PHILATELIQUE BELGO-ZAIROISE 1980

ZAIRE

3Z

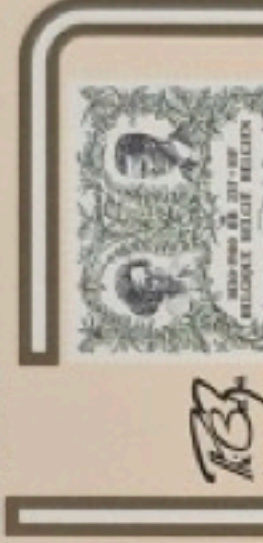
ZAIRE



ZAIRE

4Z

ZAIRE



EXPOSITION PHILATELIQUE BELGO-ZAIROISE 1980

EXPOSITION PHILATELIQUE BELGO-ZAIROISE 1980

EXPOSITION PHILATELIQUE BELGO-ZAIROISE 1980

# ZAIRE

ZAIRE

1Z

ZAIRE



ZAIRE

2Z

ZAIRE



EXPOSITION PHILATELIQUE BELGO-ZAIROISE 1980

EXPOSITION PHILATELIQUE BELGO-ZAIROISE 1980

EXPOSITION PHILATELIQUE BELGO-ZAIROISE 1980

ZAIRE

3Z

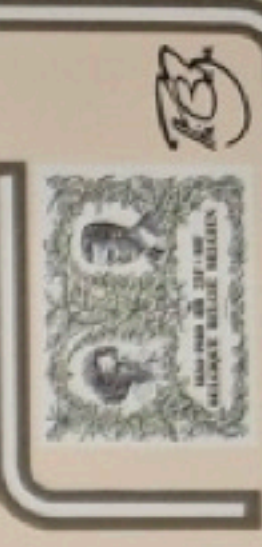
ZAIRE



ZAIRE

4Z

ZAIRE



EXPOSITION PHILATELIQUE BELGO-ZAIROISE 1980

EXPOSITION PHILATELIQUE BELGO-ZAIROISE 1980

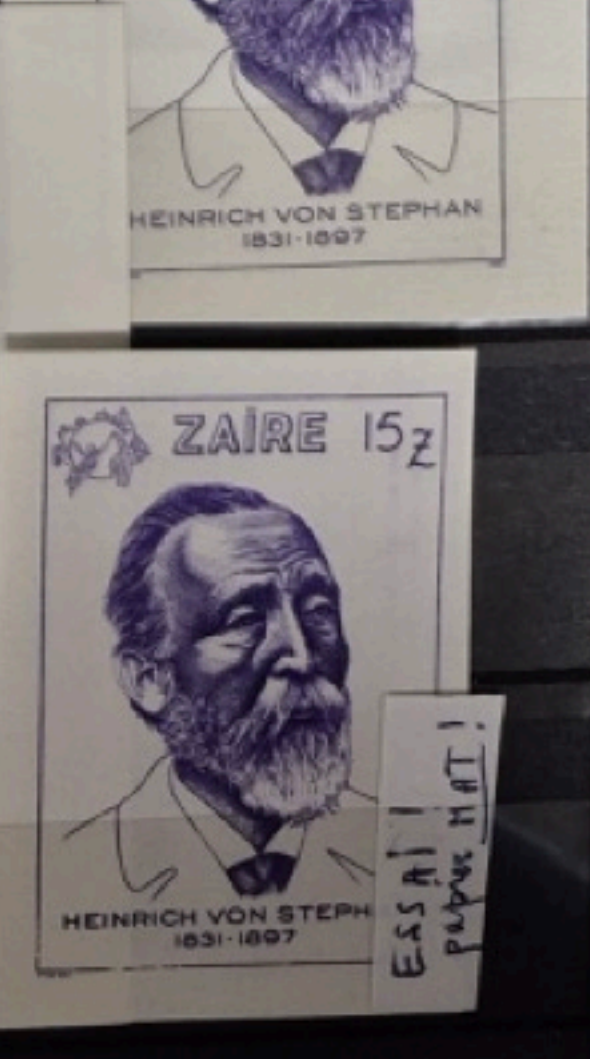
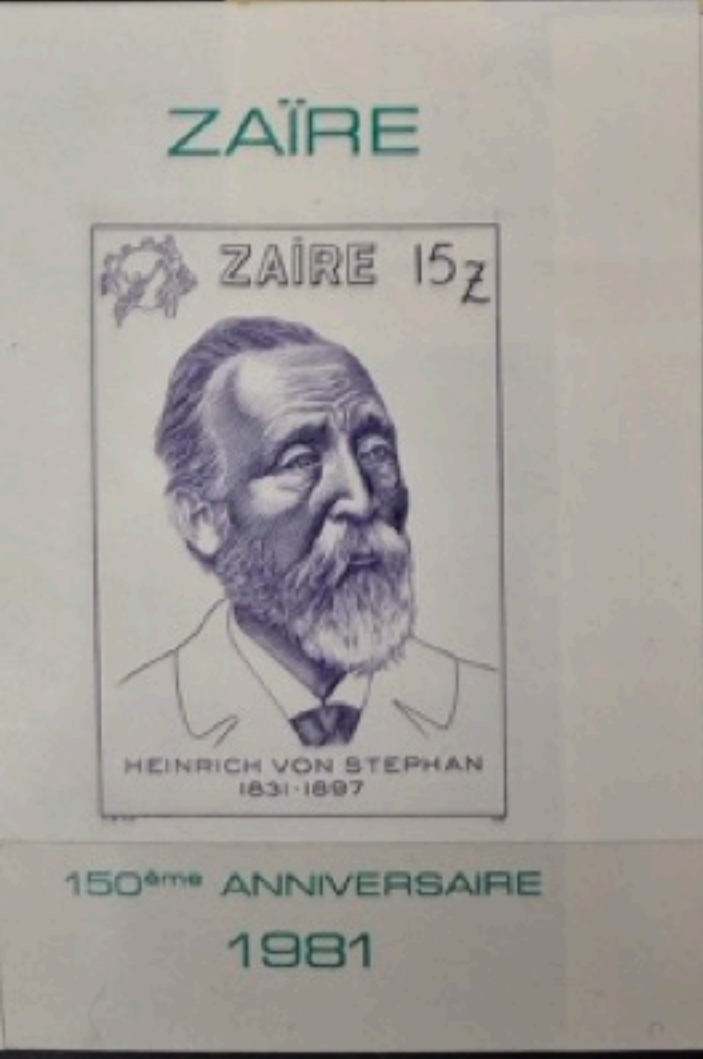
EXPOSITION PHILATELIQUE BELGO-ZAIROISE 1980

# EXPOSITION PHIBELZA 1980





*Village plus clairs sombres*



*Essai! papier MAT!*

75<sup>e</sup> ANNIVERSAIRE DU SCOUTISME



REPUBLIQUE DU ZAIRE

75<sup>e</sup> ANNIVERSAIRE DU SCOUTISME



REPUBLIQUE DU ZAIRE

NOËL 1985



*La Vierge et l'Enfant*

**LE TITIEN**  
(1485 - 1576)

PINACOTHÈQUE DE MUNICH

NOËL 1985



ZAIRE 100 Z



NOËL 1985



*La Vierge et l'Enfant*

**LE TITIEN**  
(1485 - 1576)

PINACOTHÈQUE DE MUNICH



ZAIRE 100 Z

7Z



7Z



L.T.B. NOKOLO

1985 - I.P.M. S.A.

10Z



10Z



1985 - I.P.M. S.A.

15Z



15Z



Pousseur LUEBO

1985 - I.P.M. S.A.

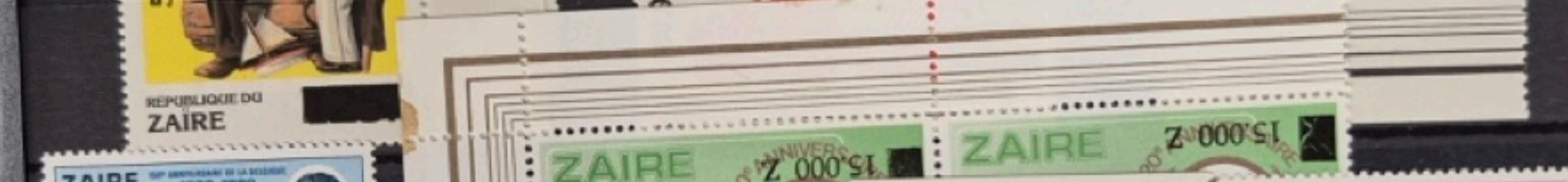
50Z

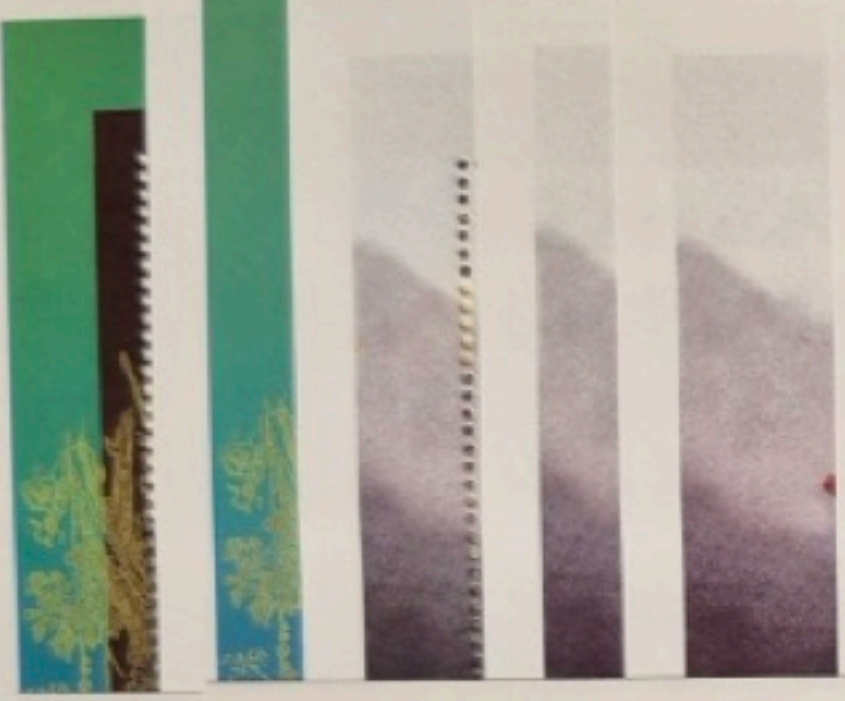
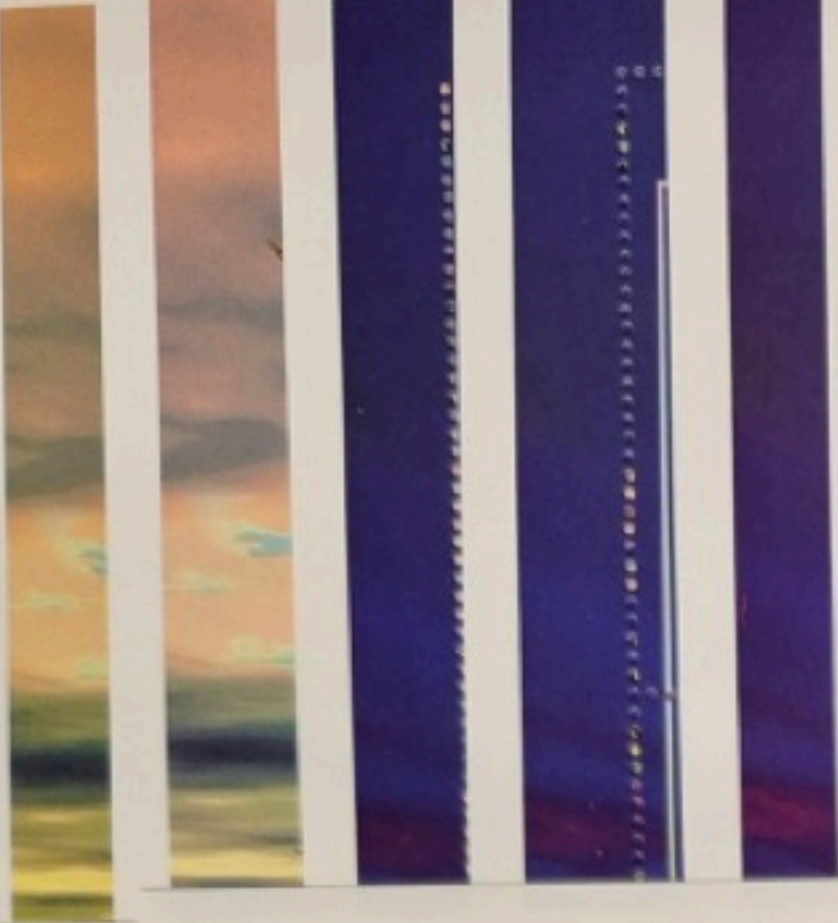


50Z



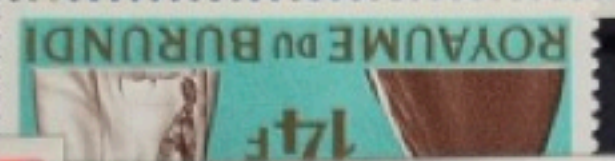
1985 - I.P.M. S.A.











ROYAUME DU BURUNDI

ROYAUME DU BURUNDI

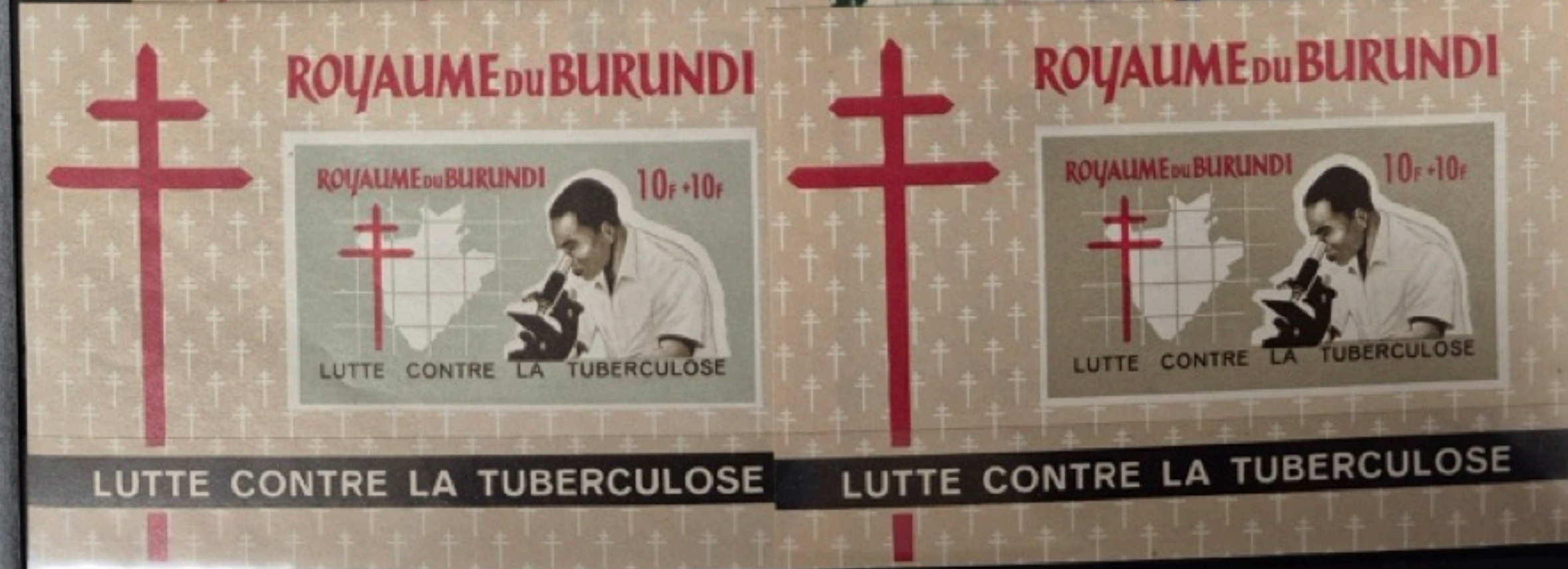


TUBERCULOSE

LUTTE CON

LUTTE CONTRE LA TUBERCULOSE

LUTTE CONTRE LA TUBERCULOSE



ROYAUME DU BURUNDI

ROYAUME DU BURUNDI



LUTTE CONTRE LA TUBERCULOSE

LUTTE CONTRE LA TUBERCULOSE



CENTENAIRE DE L'UNION INTERNATIONALE DES TELECOMMUNICATIONS

IRE DE :TERNA- 'S TELE- ATIONS

\* ANNEE DE LA COOPERATION INTERNATIONALE



\* ANNIVERSAIRE DES NATIONS UNIES \*  
1965 ET 20\*

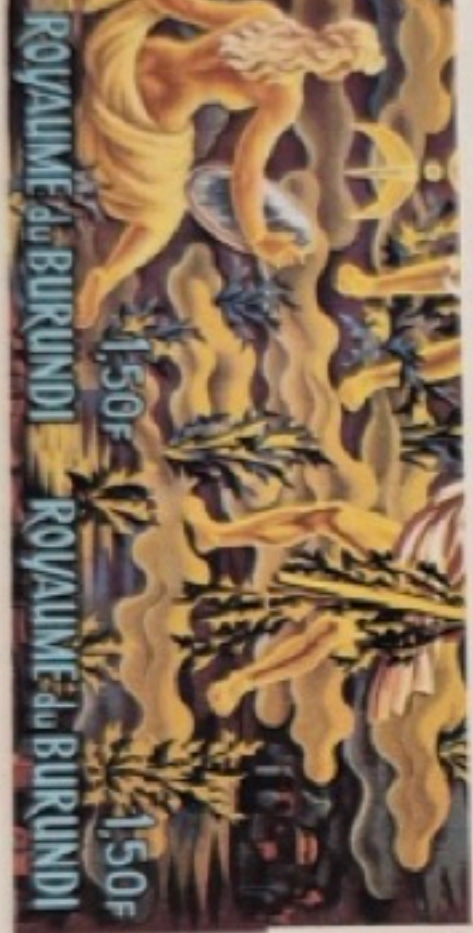


Royaume du  
**BURUNDI**

Royaume du  
**BURUNDI**

Royaume du  
**BURUNDI**





LE TAPIS LE PLUS GRAND DU MONDE, LE PLUS BEAU EXEMPLE DE L'ART DE LA TAPISSERIE MODERNE QUI SE TROUVE DANS L'ASSEMBLÉE GÉNÉRALE DES NATIONS UNIES, SYMBOLISE LE TRAVAIL ET LES IDÉALS DES NATIONS UNIES.

ET LES IDÉALS DES



LE TAPIS LE PLUS GRAND DU MONDE, LE PLUS BEAU EXEMPLE DE L'ART DE LA TAPISSERIE MODERNE QUI SE TROUVE DANS L'ASSEMBLÉE GÉNÉRALE DES NATIONS UNIES, SYMBOLISE LE TRAVAIL ET LES IDÉALS DES NATIONS UNIES.



REPUBLIQUE DU BURUNDI



ROYAUME DU BURUNDI



CE 1 JUILLET 1966

REPUBLIQUE DU BURUNDI



ROYAUME DU BURUNDI



PENDEANCE 1 JUILLET 1966

PENDEANCE 1 JUILLET 1966

403F Royaume  
ROR/ 4400 6/485

4<sup>e</sup> ANNIVERSAIRE DE L'INDEP



REPUBLIQUE DU BURUNDI

# REPUBLIQUE DU BURUNDI



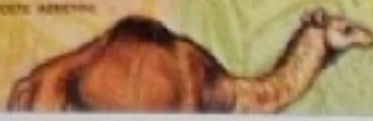
14f



14f



14f



14f



14f

# REPUBLIQUE DU BURUNDI



14f



14f



14f



14f



14f



14f



14f



14f



14f



14f



14f



14f



14f



14f



14f



14f



14f



14f



14f



14f



14f



14f



14f



14f



14f



14f

LAC VICTORIA  
KAGERA  
RUVURU  
RUVYIRONZA  
MONT GIKIZI, SOURCE  
LA PLUS MERIDIIONALE  
DU NIL



REPUBLIQUE du BURUNDI

Republique  
du Burundi

CENTENAIRE  
DE LA MORT DE SA  
ROYAUME HILL



REPUBLIQUE du BURUNDI



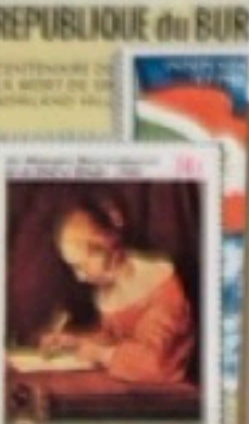
REPUBLIQUE du BURUNDI



REPUBLIQUE du BURUNDI



REPUBLIQUE du BURUNDI



REPUBLIQUE du BURUNDI



REPUBLIQUE du BURUNDI



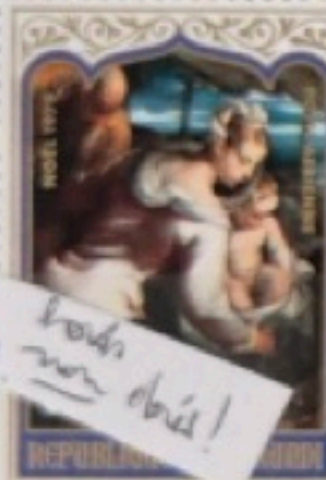
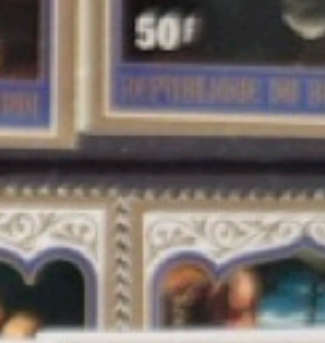
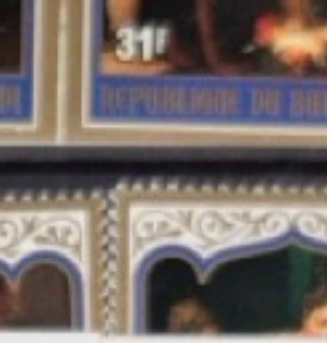
REPUBLIQUE du BURUNDI



REPUBLIQUE du BURUNDI

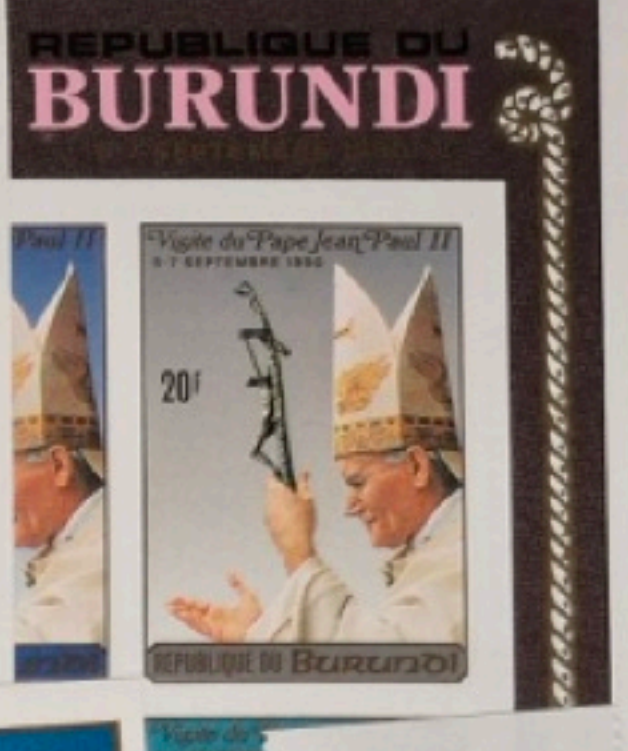


REPUBLIQUE du BURUNDI



*Handwritten note:*  
Tous non abés!





AEROGRAMME



Rene Jonnekers  
124 Rue du Midi  
Bruxelles 1  
Belgique

PAR AVION

AEROGRAMME



M. Aug. Wery,

23, ave des Klauwaerts,

IXELLES-BRUXELLES,

PAR AVION

Belgique.





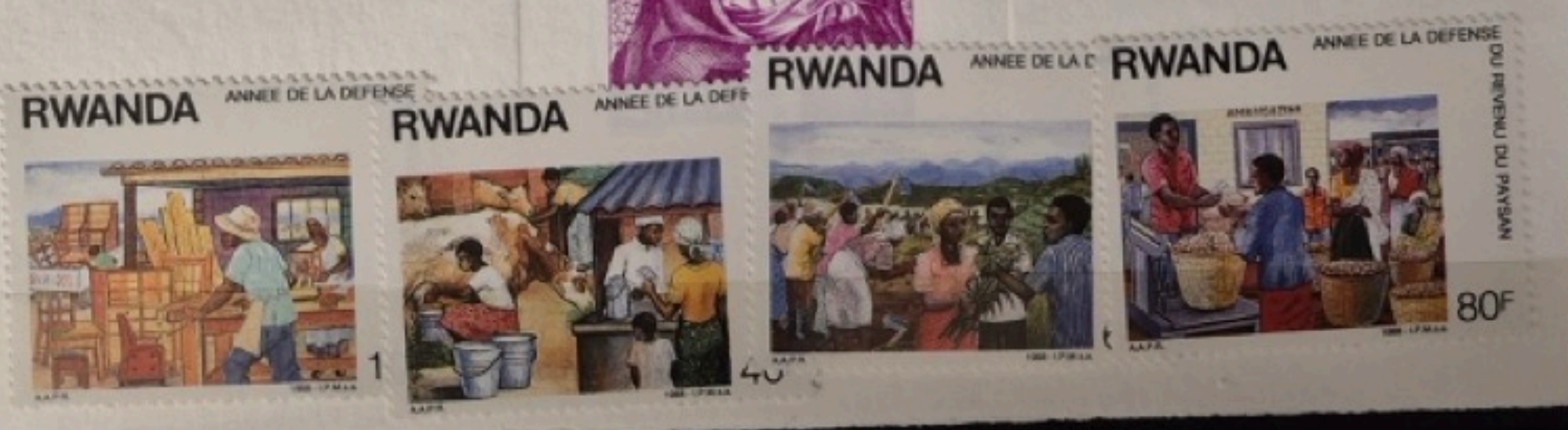
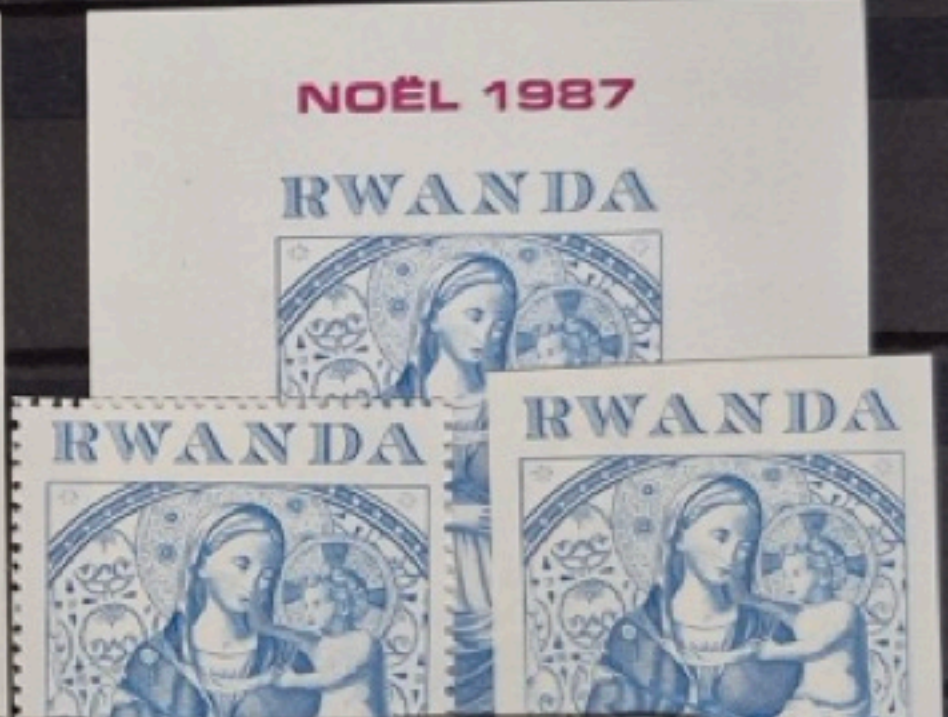
9.20

845





RWANDA



République du Burundi



République du Burundi

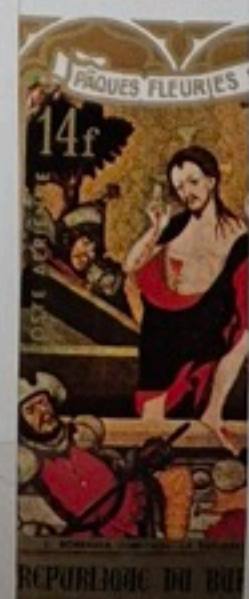
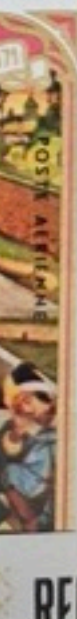


République du Burundi



République du Burundi

République du Burundi





LA CONQUÊTE DE L'ESPACE



L'ESPACE



LA CONO

LA CONQUÊTE DE L'ESPACE



REP

APOLLO 16

REPUBLIQUE DU BURUNDI

REPUBLIQUE DU BURUNDI

APOLLO 16

REPUBLIQUE DU BURUNDI

REPUBLIQUE DU BURUNDI

APOLLO 16

REPUBLIQUE DU BURUNDI

REPUBLIQUE DU BURUNDI

APOLLO 16

REPUBLIQUE DU BURUNDI

REP

APOLLO 16

REPUBLIQUE DU BURUNDI

REPUBLIQUE DU BURUNDI

APOLLO 16

REPUBLIQUE DU BURUNDI

REPUBLIQUE DU BURUNDI

APOLLO 16

REPUBLIQUE DU BURUNDI

REPUBLIQUE DU BURUNDI

APOLLO 16

REPUBLIQUE DU BURUNDI

COMMEMORANT L'EXPLORATION DE L'AFRIQUE PAR STANLEY ET LIVINGSTONE



COMMEMORANT L'EXPLORATION DE L'AFRIQUE PAR STANLEY ET LIVINGSTONE



COMMEMORANT L'EXPLORATION DE L'AFRIQUE PAR STANLEY ET LIVINGSTONE



COMMEMORANT L'EXPLORATION DE L'AFRIQUE PAR STANLEY ET LIVINGSTONE



COMMEMORANT L'EXPLORATION DE L'AFRIQUE PAR STANLEY ET LIVINGSTONE



COMMEMORANT L'EXPLORATION DE L'AFRIQUE PAR STANLEY ET LIVINGSTONE



COMMEMORANT L'EXPLORATION DE L'AFRIQUE PAR STANLEY ET LIVINGSTONE



COMMEMORANT L'EXPLORATION DE L'AFRIQUE PAR STANLEY ET LIVINGSTONE



COMMEMORANT L'EXPLORATION DE L'AFRIQUE PAR STANLEY ET LIVINGSTONE



COMMEMORANT L'EXPLORATION DE L'AFRIQUE PAR STANLEY ET LIVINGSTONE



COMMEMORANT L'EXPLORATION DE L'AFRIQUE PAR STANLEY ET LIVINGSTONE



COMMEMORANT L'EXPLORATION DE L'AFRIQUE PAR STANLEY ET LIVINGSTONE



REPUBLIQUE DU BURUNDI

REPUBLIQUE DU BURUNDI

REPUBLIQUE DU BURUNDI

COMMEMORANT L'EXPLORATION DE L'AFRIQUE PAR STANLEY ET LIVINGSTONE

COMMEMORANT L'EXPLORATION DE L'AFRIQUE PAR STANLEY ET LIVINGSTONE



REPUBLIQUE DU BURUNDI

REPUBLIQUE DU BURUNDI

REPUBLIQUE DU BURUNDI

REPUBLIQUE DU BURUNDI



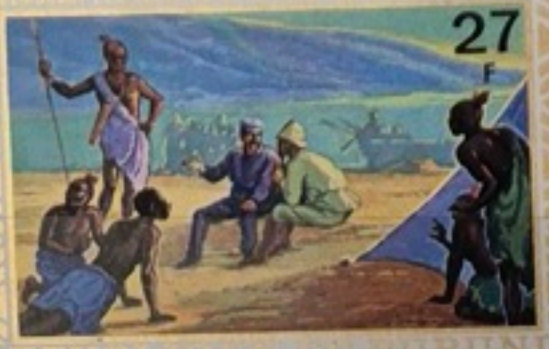
REPUBLIQUE DU BURUNDI

REPUBLIQUE DU BURUNDI

REPUBLIQUE DU BURUNDI

REPUBLIQUE DU BURUNDI

REPUBLIQUE DU BURUNDI



REPUBLIQUE DU BURUNDI

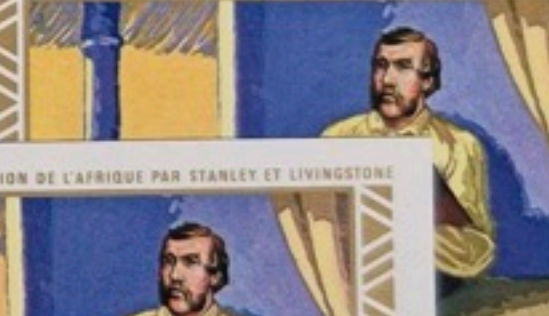
REPUBLIQUE DU BURUNDI

REPUBLIQUE DU BURUNDI

REPUBLIQUE DU BURUNDI

COMMEMORANT L'EXPLORATION DE L'AFRIQUE PAR STANLEY ET LIVINGSTONE

COMMEMORANT L'EXPLORATION DE L'AFRIQUE PAR STANLEY ET LIVINGSTONE



REPUBLIQUE DU BURUNDI

REPUBLIQUE DU BURUNDI

REPUBLIQUE DU BURUNDI

REPUBLIQUE DU BURUNDI



REPUBLIQUE DU BURUNDI

REPUBLIQUE DU BURUNDI

REPUBLIQUE DU BURUNDI

REPUBLIQUE DU BURUNDI

REPUBLIQUE DU BURUNDI



REPUBLIQUE DU BURUNDI

REPUBLIQUE DU BURUNDI

REPUBLIQUE DU BURUNDI

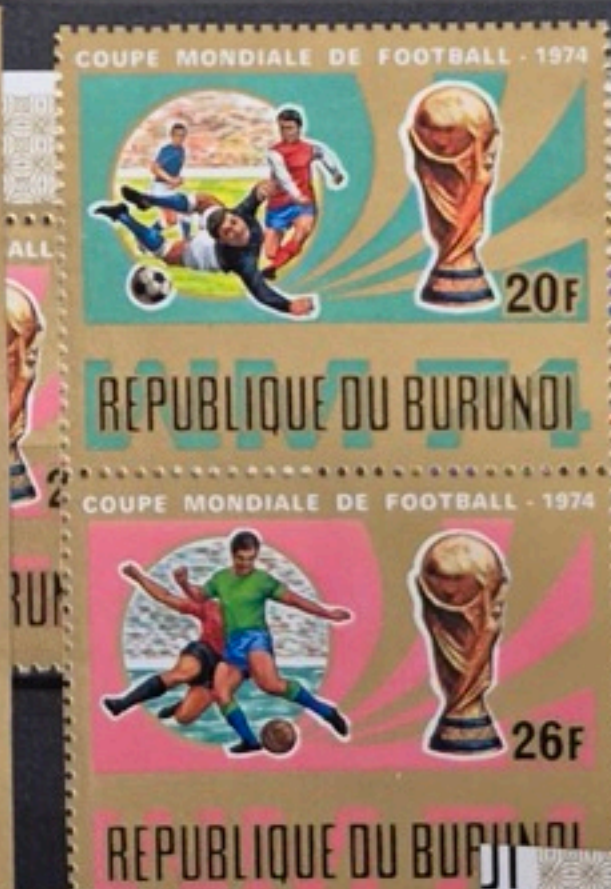
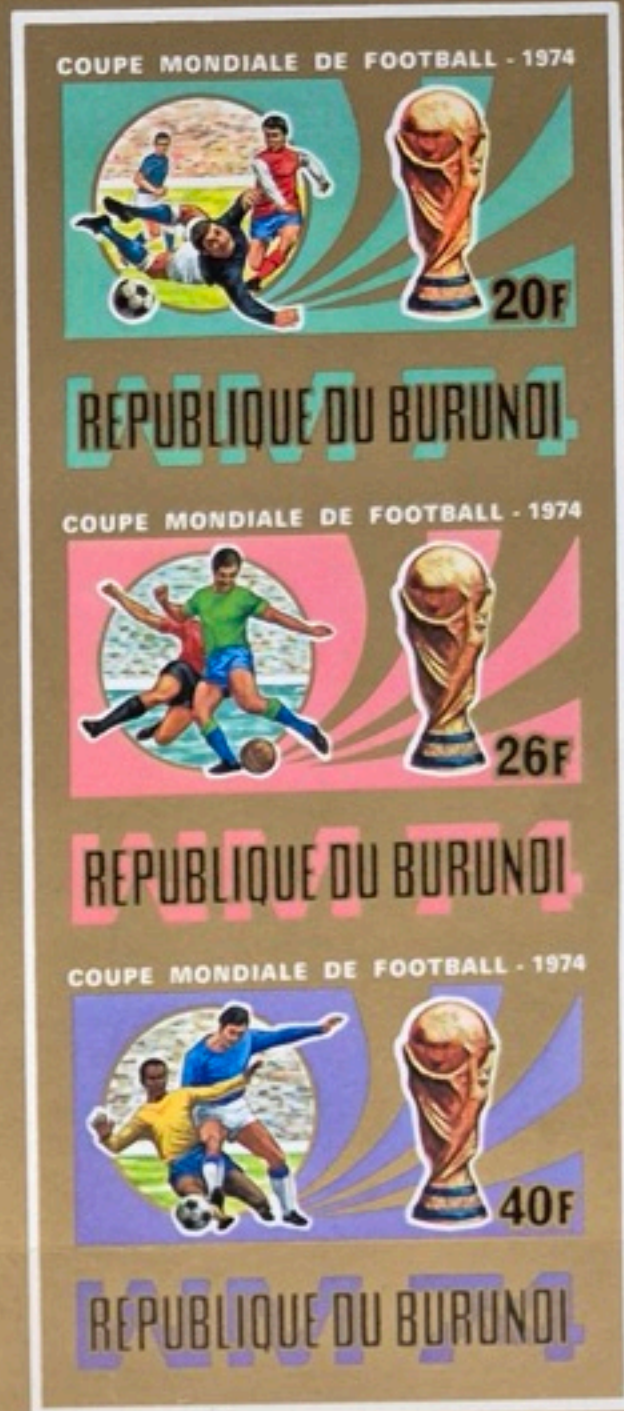
REPUBLIQUE DU BURUNDI

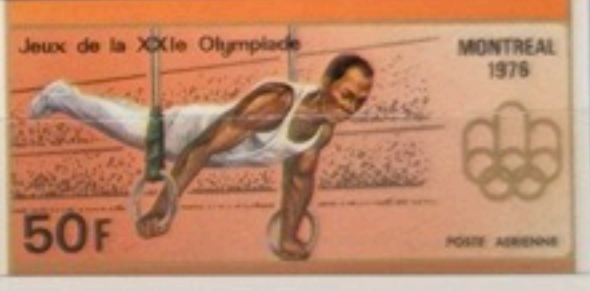
COUPE MONDIALE DE FOOTBALL

MUNICH 1974

COUPE MONDIALE DE FOOTBALL

MUNICH 1974





MONTREAL  
1976

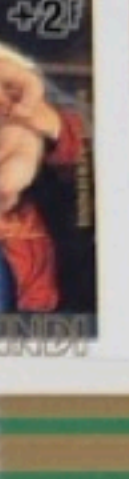
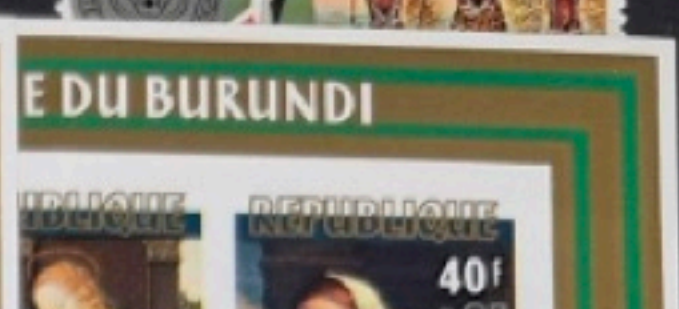
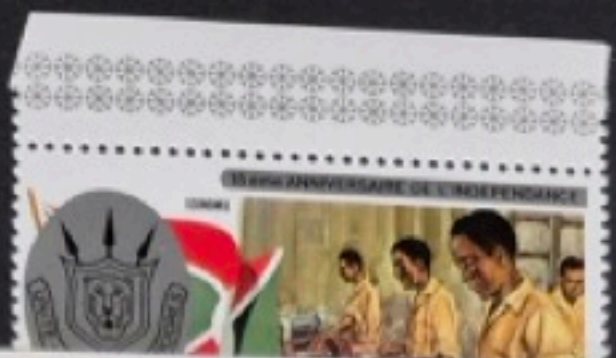
Jeux de la  
XXle Olympiade



MONTREAL  
1976

Jeux de la  
XXle Olympiade









R ASCENSION No 6541

Mr. Willi Bindewald  
keltenstr. 14  
D-6700 Ludwigshafen 25  
West-Germany

90.-



CENTENARY of H.M.S. CHALLENGER'S VISIT



TRISTAN da CUNHA



TRISTAN da CUNHA 7 1/2 P      TRISTAN da CUNHA 25 P  
CENTENARY OF THE BIRTH OF CHURCHILL

# An artist's view of Tristan da Cunha



Stollenhoff Island



# An artist's view of Tristan da Cunha



Stollenhoff Island



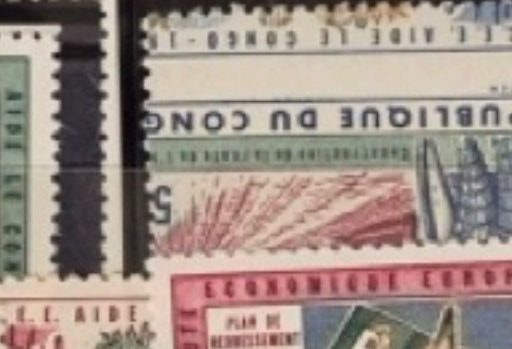




REPUBLIQUE DU CONGO  
ADMINISTRATION DES POSTES



CENTENAIRE DE LA CROIX ROUGE



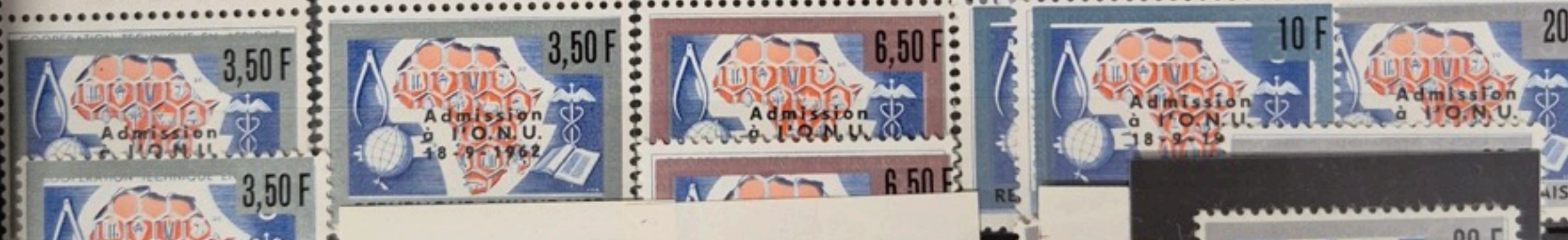
153/62 c 1200







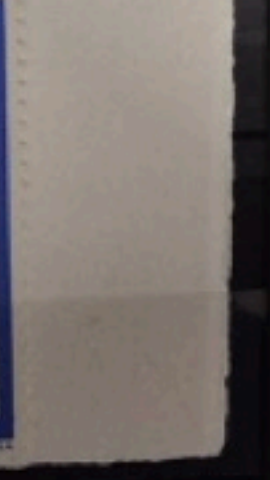


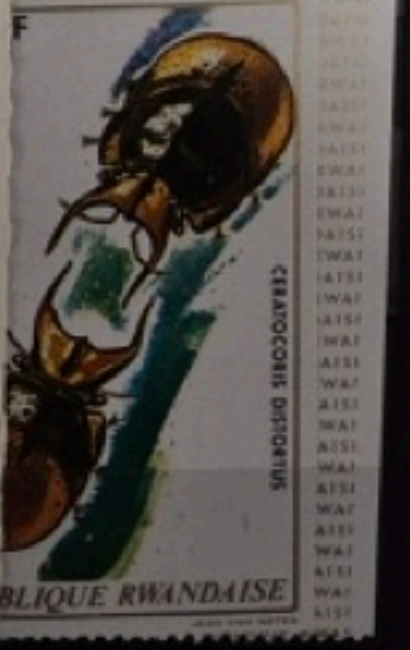
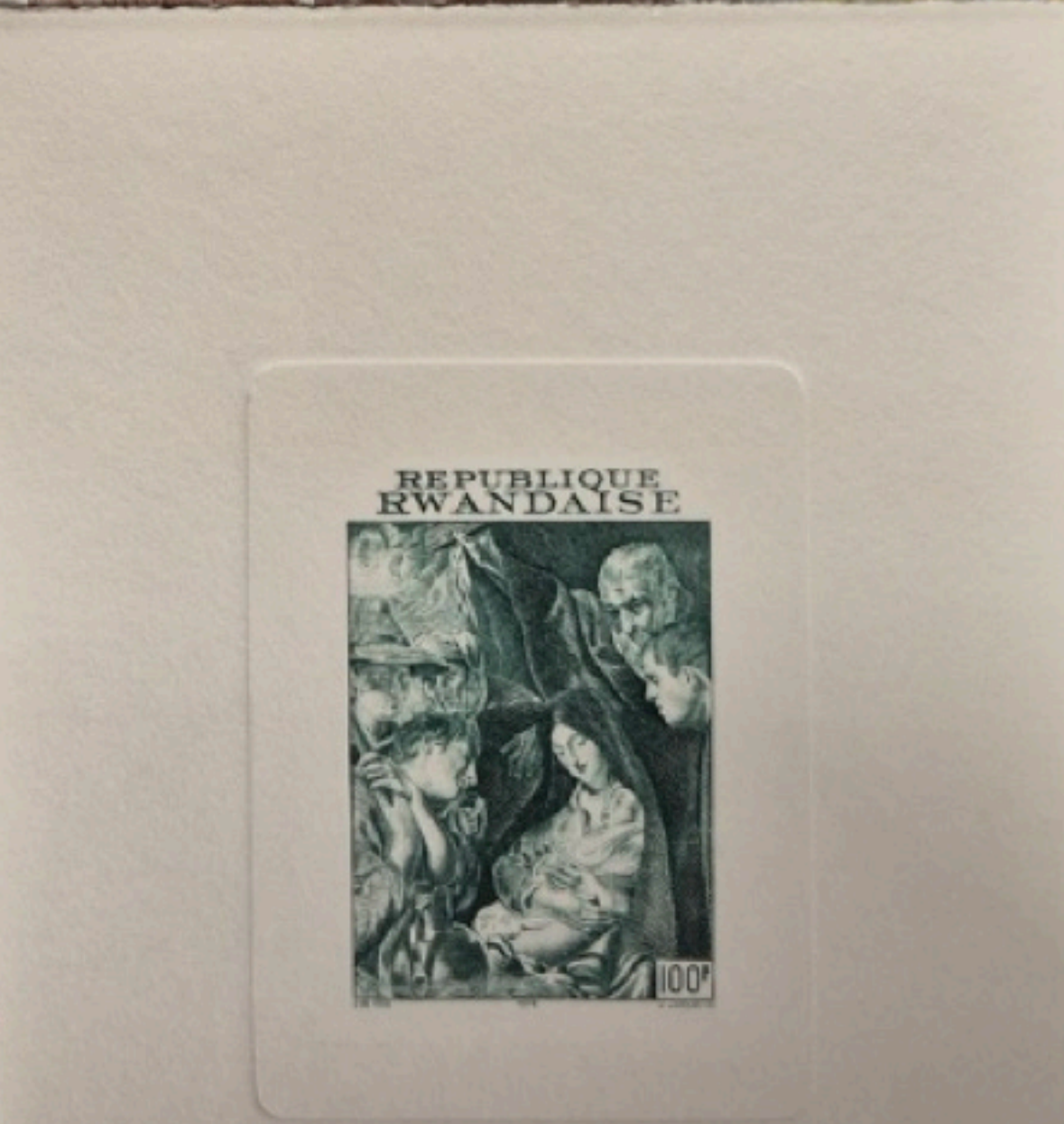
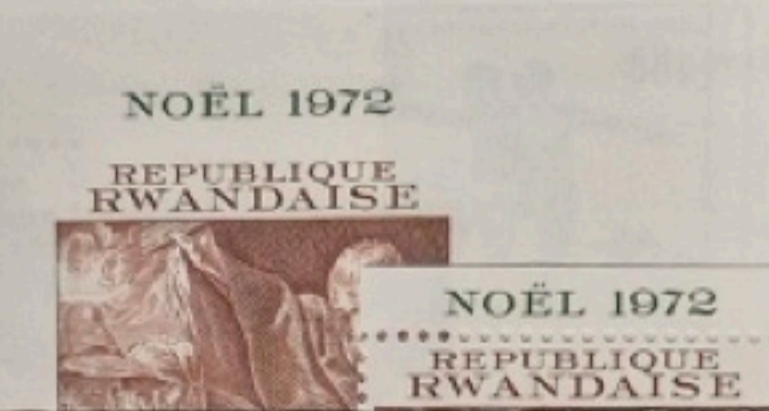
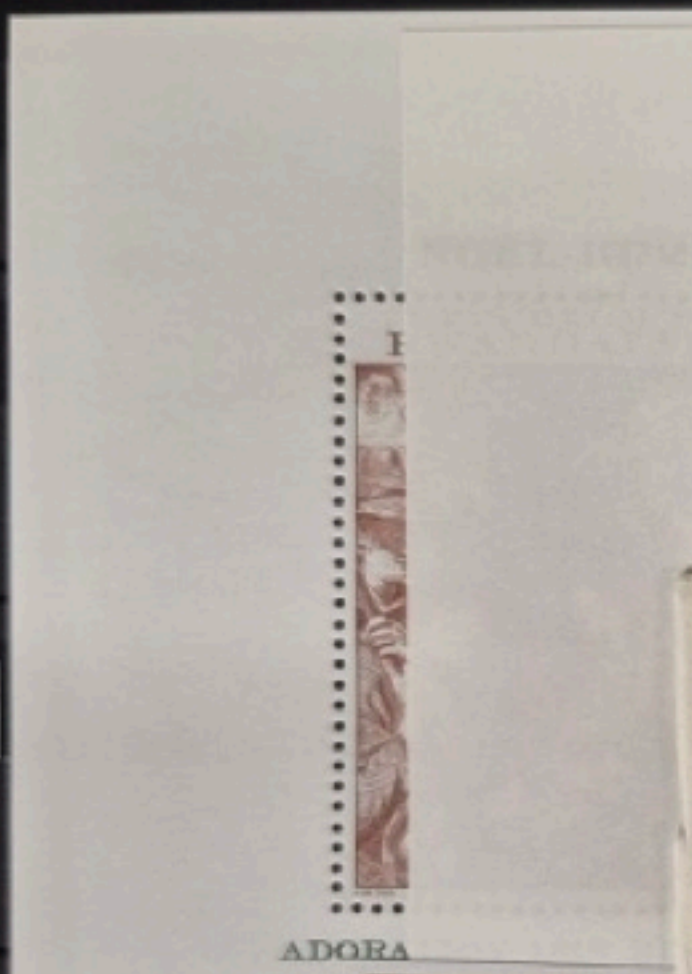


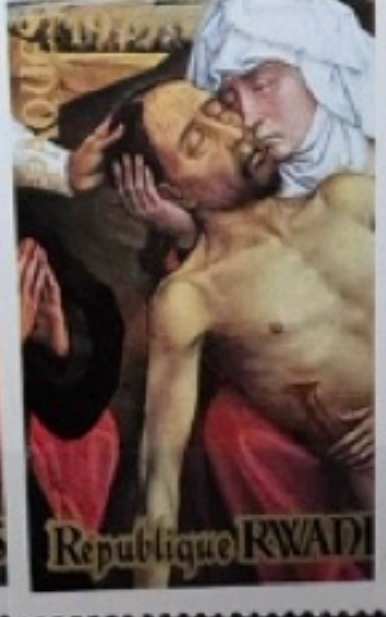
*var. surcharge sur  
texte français (n° 217)  
AR*

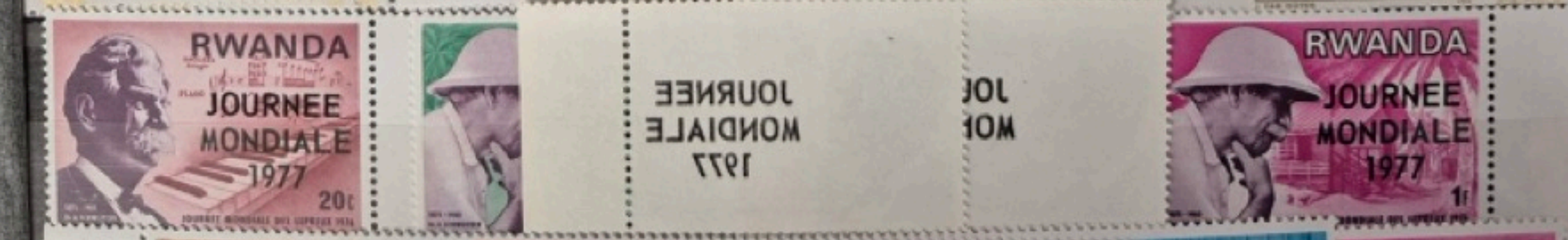


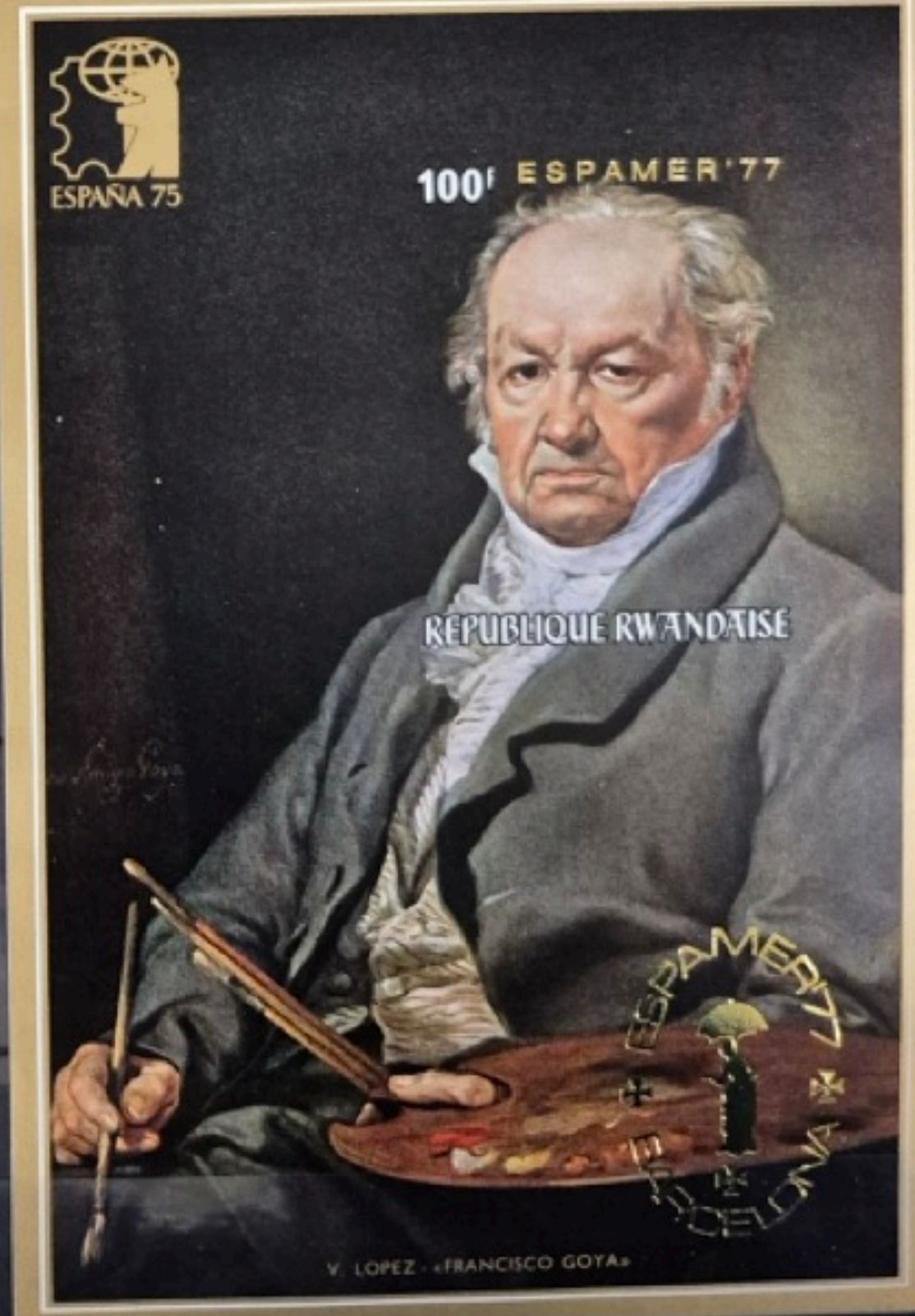
NOËL 1969

















F.I.G.A.S.  
**10p**  
 FREIGHT

F.I.G.A.S.  
**20p**  
 FREIGHT

F.I.G.A.S.  
**£1.00**  
 FREIGHT







BEST WISHES &  
GOOD FORTUNE

謹祝香港繁榮昌盛

# GUINNESS WORLD RECORDS™

Copyright © and TM Guinness World Records Ltd. Reproduced under license.

1st July, 1997 香港回歸中國專集-1.7.1997 7-11



Blue Whale  
*Balaenoptera musculus*  
South Georgia and the South Sandwich Islands



Blue Whale  
*Balaenoptera musculus*  
South Georgia and the South Sandwich Islands



Leopard Seal  
*Hydrurga leptonyx*  
South Georgia and the South Sandwich Islands



Elephant Seal  
*Mirounga leonina*  
South Georgia and the South Sandwich Islands



Sperm Whale  
*Physeter macrodon*  
South Georgia and the South Sandwich Islands



Leopard Seal  
*Hydrurga leptonyx*  
South Georgia and the South Sandwich Islands

## Largest Pinniped

The largest of the 34 known species of pinniped is the Southern Elephant Seal (*Mirounga leonina*) of the sub-Antarctic Islands. Bulls average about 5m (16ft) in length. The largest accurately measured bull weighed at least 4 tonnes (8010lb) and measured 6.5m (21ft 4in).

## Largest Pinniped - alive

The largest reported live specimen is a bull nicknamed "Stalin" from South Georgia weighing 2662kg (5869lb) and 5.7m (18ft 9in) in length, recorded by members of the British Antarctic Survey on 14 October 1985.

## Most Dangerous Pinniped

The carnivorous Leopard Seal (*Hydrurga leptonyx*) is the only species with a reputation for apparently unprovoked attacks on people.

## Heaviest Mammal

A female Blue Whale weighing 190 tonnes (418,877,800lb) and measuring 27.6m (90ft 5in) in length was caught in the Southern Ocean on 20 March 1947.

## Longest Mammal

A female Blue Whale measuring 33.58m (110ft 2in) landed in 1909 at Grytviken, South Georgia.

## Deepest Dive by a Mammal

The deepest authenticated dive by a mammal was made by a bull Sperm Whale the coast of Dominica, in 1991. It was recorded as being 2000m (6500ft) deep and lasted 1 hour 13 minutes.

## Loudest Animal Sound

The loudest animal sound is the low frequency pulses made by Blue Whales (*Balaenoptera musculus*) and Fin Whales (*B. physalus*). It has reached as much as 188dB.

## Long Power Endurance

Elephant Seals in the Antarctic can dive 1620m (5300ft) and can stay submerged for up to two hours.



£1.50

South Georgia and the South Sandwich Islands

**Largest Live Pinniped**  
A 2662kg (5869lb) bull, nicknamed Stalin, from South Georgia, was measured in 1985 and had a total length of 5.7m (18ft 9in).

**Largest Bull Elephant Seal**  
The largest accurately measured specimen of the elephant seal was a bull which weighed at least 4 tonnes (8010lb) and measured 6.5m (21ft 4in) after flensing (stripping of the blubber or skin).

GUINNESS WORLD RECORDS

Mammals of South Georgia & the South Sandwich Islands

GUINNESS WORLD RECORDS

GUINNESS WORLD RECORDS™

Copyright © and TM Guinness World Records Ltd. Reproduced under license.



香港回归祖国（金箔小型张）1997年7月1日发行

1997年7月1日，中华人民共和国政府对香港恢复行使主权，洗雪了中华民族蒙受的百年耻辱，香港从此步入历史的新纪元。有香港同胞的努力，有强大的祖国作后盾，香港的明天一定会更加美好。为纪念香港回归祖国特发行邮折一枚。

The day July 1, 1997 when the government of the People's Republic of China resumes the exercise of sovereignty over Hong Kong marks the end of the humiliation subjected to the Chinese people in the past century and a new era for Hong Kong. With the common efforts by Hong Kong compatriots and a powerful motherland as its backing, Hong Kong's future will be even more beautiful. This folder is hereby issued to commemorate Hong Kong's return to her motherland.



PRO PATRIA 1936



PREIS - PRIX - PREZZO: FR. 2.-



PRO PATRIA 1936



PREIS - PRIX - PREZZO: FR. 2.-



PRO PATRIA 1936



PREIS - PRIX - PREZZO: FR. 2.-



PRO PATRIA 1936



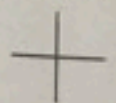
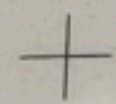
PREIS - PRIX - PREZZO: FR. 2.-



72-1992



roulazac Dordogne



HEL-2

5UM

RÉPUBLIQUE ISLAMIQUE DE MAURITANIE

الجمهورية الإسلامية الموريتانية



جراد الصحراء

CRIQUETS PELÉRINS

A. BUZIN

1988 - I.P.M. s.a.

SENEGAL  
LES CORAUX

50f

ASLAM

POSTES 1992



CARTE POSTALE

Expéditeur



LA POSTE



La circulation de ces cartes est soumise aux conditions énoncées par un Service de  
postes belges ou d'un autre pays. Ces cartes peuvent être utilisées, comme dans tout  
le Royaume, moyennant l'ajout d'un timbre-poste de 1 franc.



BELGIE - BELGIQUE



BERICHT

AVIS DE

CARTE POSTALE



ADRESSE - ADRES

M

BERICHT  
VAN ADRES-  
VERANDERING

AVIS DE  
CHANGEMENT  
D'ADRESSE

LA POSTE



Carton

9475

*[Handwritten signature]*



Carnet



Escales dans les ports de Bretagne



Handwritten text in white ink on a white strip of paper, possibly a shipping label or address, partially obscured by clear packing tape. The text is difficult to decipher but appears to include some numbers and possibly a name or address.



# LE TIMBRE CLASSIQUE

*Lot partiellement scanné*

*Lot partially scanned*

**Le Timbre Classique**

**4 rue Drouot**

**75009 Paris**

**Tél 01 42 46 63 72**

[contact@letimbreclassique.com](mailto:contact@letimbreclassique.com)